

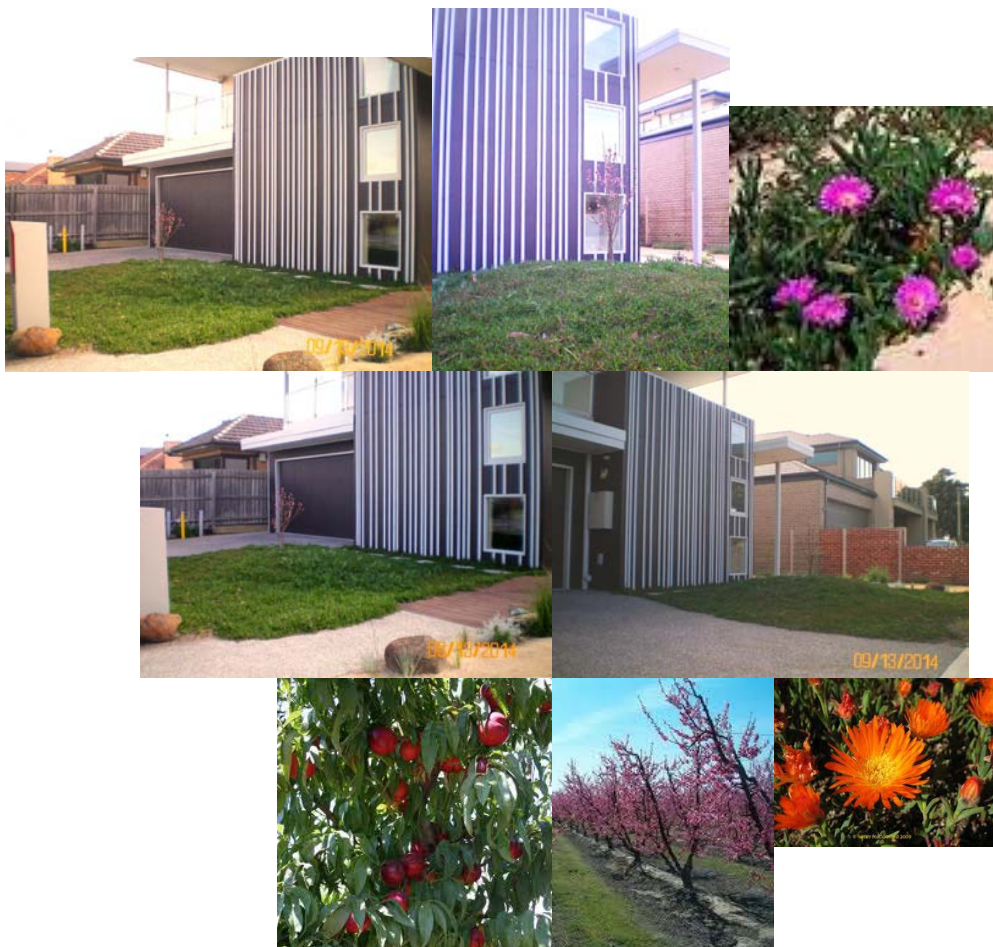
Sustainable landscape & Garden design

Location – Seaholme

Residential 9+star energy rating double storey house

The brief: to create a zen garden at the front to enhance the façade, as well to reduce the heat of the asphalt street nearby with local ground cover pig face and fruit trees. The aim is to introduce a low maintenance garden design, as well as to create a sustainable, and efficient edible garden with fruit trees planted along the fences on the side and back of the property. Majority of the building material used in this garden are recycled items of the site and elsewhere. Except the concrete driveway, other ground surfaces surround the house have a low albedo value – *So what is albedo? See Archives page of www.escservices.com.au*

Result: It is a very fruitful garden when it comes to harvesting time, with more than a dozen of fruit trees and lot of strawberry. ALL CROPS ARE ORGANICALLY GROWN including the vegetable patch of green vegetables for healthy lifestyle. This is a real sustainable edible garden for this family and their extended family members and friends. Rain water is the water source for the garden, and how efficient is that?



Location – near Glenroy

Residential double storey house

The brief: to create a tiny green spots at front balcony for a fresher look and to welcome visitors and friends as well as to reduce the heat during summer months of the concrete floor. Variety of succulents and hardy plants are introduced

Result: a green nook is packed with variety of spectacular colour to all seasons on a tight budget, with a saving water tips on how to use water efficiently.



Location – Sunshine, West of Melbourne City
Single storey house - Home owner DIY project

The brief: planning and advice on a curb appeal to a neglected 20 years old front garden with drought-tolerant plants on a small budget on a low maintenance application.

Result: A fresh curb appeal replaces a tired front garden. The colour scheme of white, blue, and various shade of green are selected for a calm, and refreshing result. All garden bed edgings are painted in dark tone of grey for a clean edge. Windows frames are off-white to reflect the white bloom of agapanthus when in the season. Propagated plants, succulents, cactus, agave, agapanthus and hardy plants are integrated. Rain water is only the main source of water usage for this front garden. The integration of a curb appeal has increased the value of this property, and insulated the building envelope as well reduced the heat of urban heat environment during summer months.



Location – West Meadows, north of Melbourne City

Single storey house – Home owner DIY project

The brief: planning and advice on a curb appeal to a front garden for future plan to scale down with drought-tolerant plants on a low maintenance application.

Result: A fresh display of a colour scheme of white, ivory, various green tone of soft leaf yuccas are introduced for a minimum maintenance requirement. Rain water is only the main source of water usage for this front garden. The integration of a curb appeal has increased the value of this property, and insulated the building envelope as well reduced the heat of urban heat environment during summer months.



A WELL-DESIGNED GARDEN CAN ADD VALUE TO YOUR HOME

The less heating and cooling required the greater the number of energy stars. So the key things to include would be good insulation, to help regulate the temperature in summer, and winter. Landscaping can enhance the property and provide benefits to the owner in maintaining more comfortable conditions in the home. By carefully planning the landscaping around the home, the heat and cold can be naturally controlled.

For further information in planning your landscape, or garden or courtyard, please contact us:

Elizabeth Tran

Founder + CEO + Design Director

W: www.escdesi.com

E: info@escservices.com.au

M: +61 411 051 041